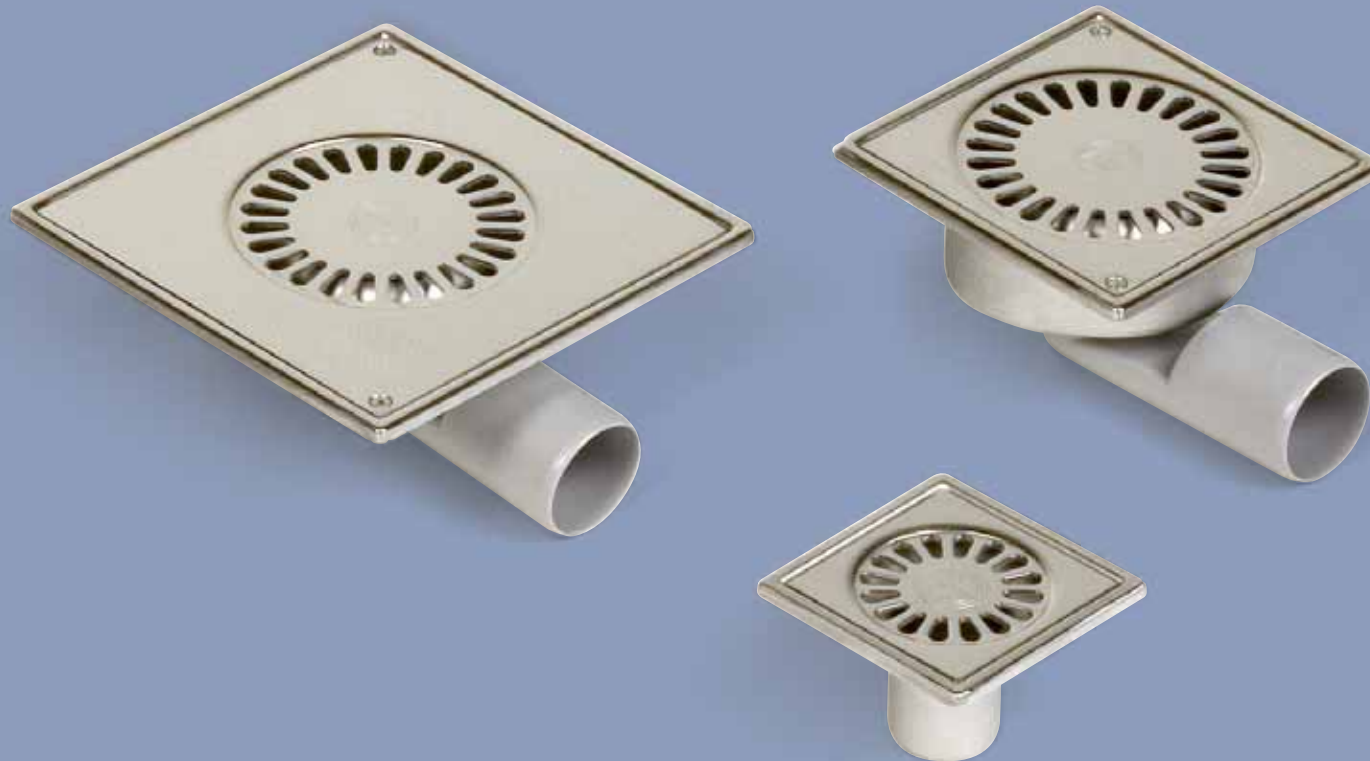


The flexible drain for easy solutions
in housing and commercial applications

BLÜCHER® Compact



K E E P I N G U P T H E F L O W

BLÜCHER® Compact Drain

Flexible drains with water trap for housing



4 solutions in one drain



Advantages

- Connection pipe allowing vertical or horizontal outlet
- Low installation height
- High flow capacity

Applications

For concrete, tiled and epoxy flooring, for instance:

- Private housing bathrooms
- Hotel bathrooms

Product details

- Frame and grating in polished stainless steel
- Integrated water trap

Options

- Frame sizes from 97x97 to 197x197 mm
- Water seal height 25, 30 or 50 mm
- Flange for liquid membrane

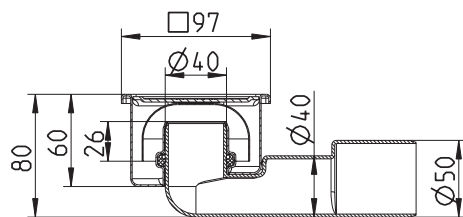


Compact Drain 100 mm with 25 mm water seal height



Drain with vertical/horizontal outlet - 4 options

Capacity 0,4/0,5 l/s
 Outlet horizontal Ø40/50 mm
 Outlet vertical Ø40/50 mm
 Item no.:
 Without screw lock 182.100.040
 With screw lock 182.101.040

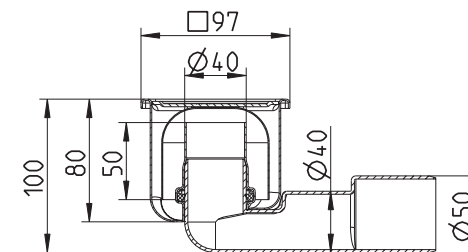


Compact Drain 100 mm with 50 mm water seal height



Drain with vertical/horizontal outlet - 4 options

Capacity 0,5/0,7 l/s
 Outlet horizontal Ø40/50 mm
 Outlet vertical Ø40/50 mm
 Item no.:
 Without screw lock 182.102.040
 With screw lock 182.103.040

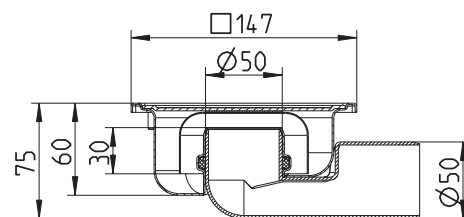


Compact Drain 150 mm with 30 mm water seal height



Drain with vertical/horizontal outlet - 2 options

Capacity 0,5/0,7 l/s
 Outlet horizontal Ø50 mm
 Outlet vertical Ø50 mm
 Item no.:
 Without screw lock 182.150.050
 With screw 182.151.050

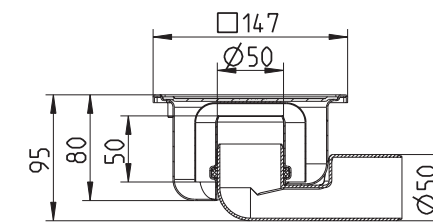


Compact Drain 150 mm with 50 mm water seal height

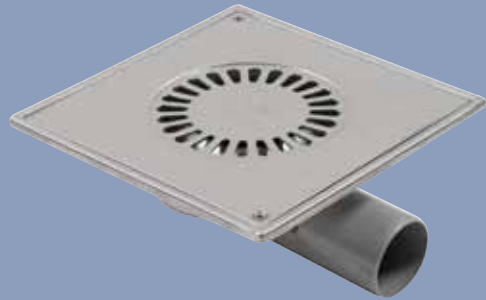


Drain with vertical/horizontal outlet - 2 options

Capacity 0,5/0,7 l/s
 Outlet horizontal Ø50 mm
 Outlet vertical Ø50 mm
 Item no.:
 Without screw lock 182.152.050
 With screw 182.153.050

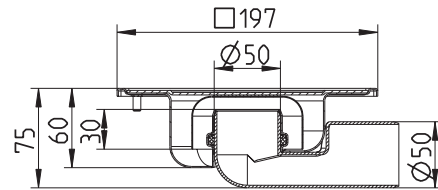


Compact Drain 200 mm with 30 mm water seal height



Drain with vertical/horizontal outlet - 2 options

Capacity	0,4/0,5 l/s
Outlet horizontal	Ø50 mm
Outlet vertical	Ø50 mm
Screw lock	Included
Item no.	182.201.050

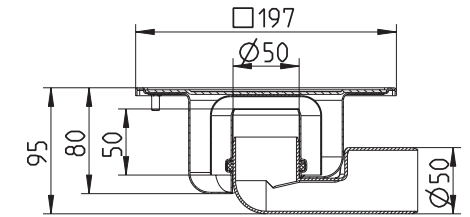


Compact Drain 200 mm with 50 mm water seal height

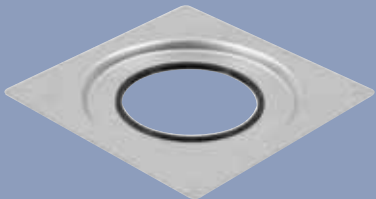


Drain with vertical/horizontal outlet - 2 options

Capacity	0,5/0,7 l/s
Outlet horizontal	Ø50 mm
Outlet vertical	Ø50 mm
Screw lock	Included
Item no.	182.203.050

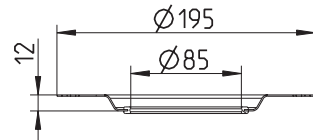


Flange for Compact Drain 100 mm

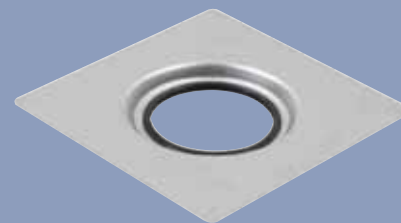


Flange for liquid membrane, for Compact drain

Dimension	195 x 195 mm
Diameter	Ø85 mm
Height	12 mm
Item no.	620.300.024

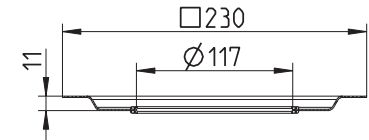


Flange for Compact Drain 150 mm and 200 mm



Flange for liquid membrane, for Compact drain

Dimension	230 x 230 mm
Diameter	Ø117 mm
Height	11 mm
Item no.	620.300.025



BLÜCHER® Compact Drain

Easy drainage without water trap for housing



Advantages

- Low installation height
- High flow capacity

Applications

Indoor as point outlet connected to a "P" water trap. For concrete, tiled and epoxy flooring, for instance:

- Private housing bathrooms
- Hotel bathrooms
- Balconies

Product details

- Frame and grating in polished stainless steel
- Screw lock included

Options

- Frame sizes 97x97 and 147 x147 mm
- Outlet Ø40-100 mm
- Capacity 0,6-1,0 l/s

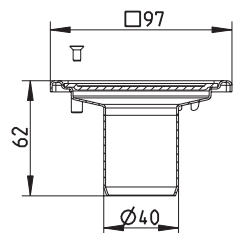


Compact Drain 100 mm vertical outlet

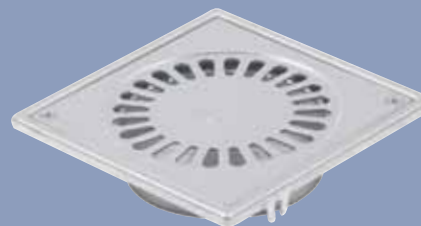


Drains with vertical outlet Ø40/50/75 mm

Capacity	0,6 l/s
Outlet vertical	Ø40/50/75 mm
Height	62/74/26 mm
Screw lock	Included
Item nos.:	
Outlet Ø40 mm	183.101.040
Outlet Ø50 mm	183.101.050
Outlet Ø75 mm	183.101.075

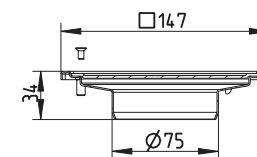


Compact Drain 150 mm vertical outlet



Drains with vertical outlet Ø75/100 mm

Capacity	1,0 l/s
Outlet vertical	Ø75/100 mm
Height	34/35 mm
Screw lock	Included
Item nos.:	
Outlet Ø75 mm	183.151.075
Outlet Ø100 mm	183.151.100

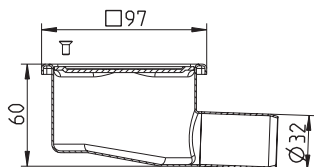


Compact Drain 100 mm horizontal outlet



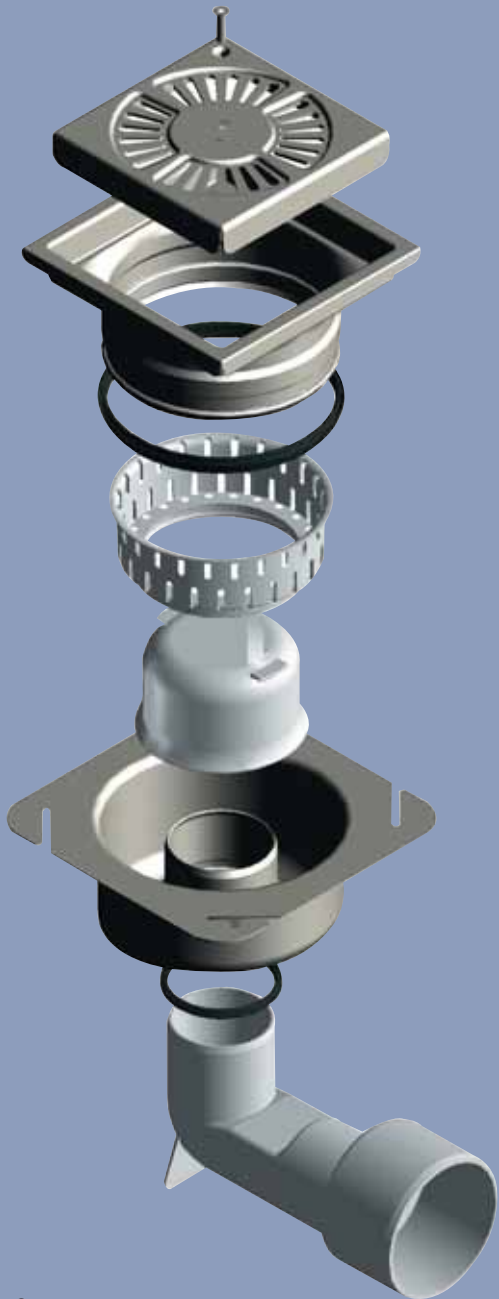
Drain with horizontal outlet

Capacity	0,6 l/s
Outlet vertical	Ø32 mm
Height	60 mm
Screw lock	Included
Item no.	182.105.032



BLÜCHER® Compact Drain

Flexible drainage for commercial applications



Four drains in one



Advantages

- Connection pipe allowing vertical or horizontal outlet
- Low installation height
- Height adjustable
- High flow capacity

Applications

For concrete, tiled and epoxy flooring, for instance:

- Supermarkets
- Fitness centres

Product details

- Frame and grating in polished stainless steel AISI 304
- Water trap and filter basket in plastic
- Integrated flange for liquid membrane
- Grating 197x197 mm
- Earth bonding
- Load capacity 1000 kg

Options

- Stainless steel AISI 316L with grating in AISI 304
- Grating without screw lock



Compact Drain 200 mm without screw lock

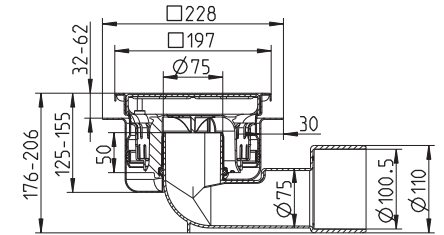
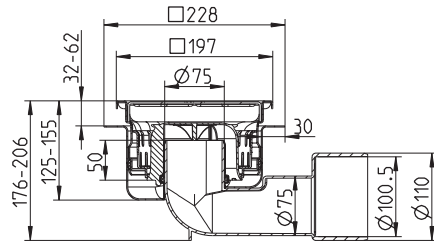
Compact Drain 200 mm with screw lock

Drain with vertical/horizontal outlet - 4 options

Drain with vertical/horizontal outlet - 4 options

Capacity 1,5/2,0 l/s
 Outlet horizontal Ø75/100/110 mm
 Outlet vertical Ø75/100/110 mm
 Flange 228x228 mm
 Item nos.:
 AISI 304 782.202.075
 AISI316L 782.202.075 S

Capacity 1,5/2,0 l/s
 Outlet horizontal Ø75/100/110 mm
 Outlet vertical Ø75/100/110 mm
 Flange 228x228 mm
 Item nos.:
 AISI 304 782.203.075
 AISI316L 782.203.075 S





BLÜCHER®



At BLÜCHER® more than 300 employees create an annual turnover of more than 50 million euro.

Through know-how, dedicated service and common sense we develop, produce and market high quality stainless steel drainage solutions for customers within the housing, commercial, industrial and marine sectors all over the world.

Find your local BLÜCHER® specialist at www.blucher.com

BLÜCHER® Compact Drain